



Dear AUS-SPEC user

**AUS-SPEC Update**

As you are aware a well-maintained specification keeps costs down by reducing the number of project variations, disputes and correctional work. Without a correct specification the additional costs are inevitably borne by you, the client.

In 2007, IPWEA, Standards Australia and NATSPEC announced that NATSPEC had been engaged to update and develop the AUS-SPEC specifications. NATSPEC, founded in 1975, is a not-for-profit organisation, whose major service is the comprehensive national specification system for all building structures with specialised packages for architects, interior designers, landscape architects, structural engineers, service engineers and domestic owners. The objective of NATSPEC is to improve the quality of construction in Australia and its involvement with AUS-SPEC will further that objective.

The partnership between IPWEA and NATSPEC builds on NATSPEC's strong history and specialised expertise in the specification field. This enables AUS-SPEC to be updated annually and further developed to meet the evolving needs of its subscribers into the future. NATSPEC encourages direct feedback from its subscribers so that the whole industry can gain from the experience of others.

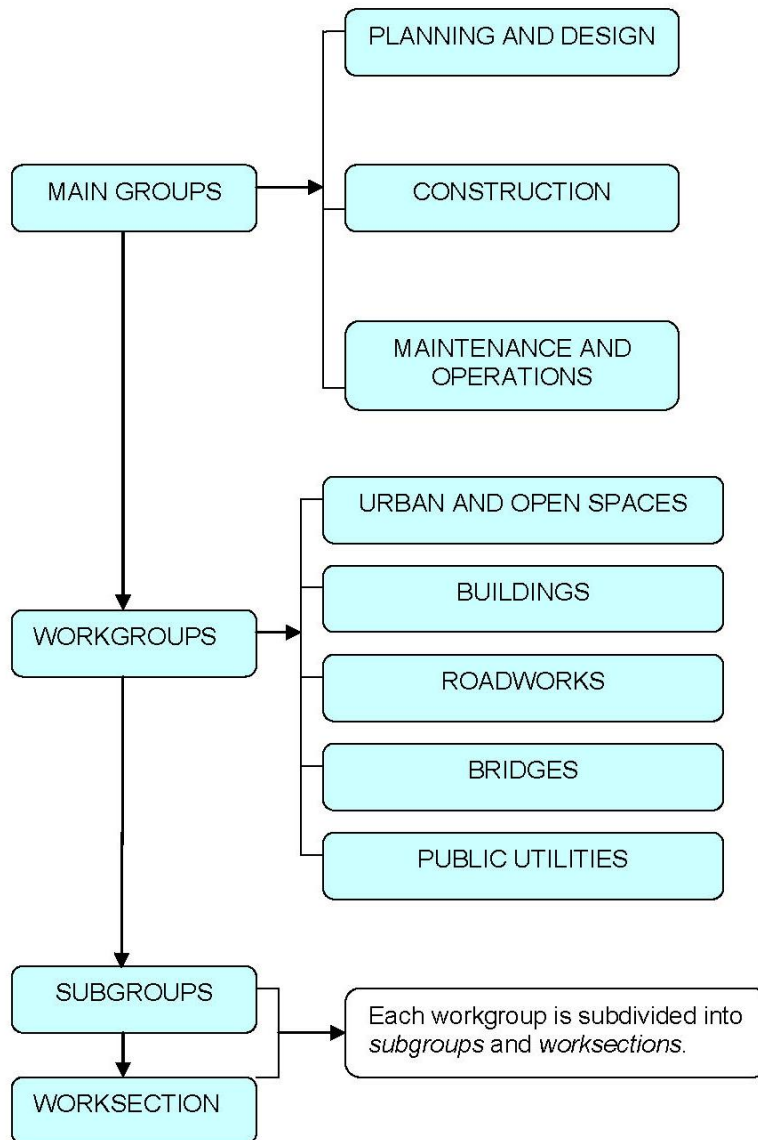
The 2007 release restructured AUS-SPEC into the national classification system allowing specifications to be compiled using NATSPEC's SPECbuilder. The AUS-SPEC packages also include a number of additional NATSPEC worksections to strengthen AUS-SPEC. Councils that already use NATSPEC for their building specifications will quickly adapt to using the NATSPEC specification system for civil works. For those not using NATSPEC, SPECbuilder Live offers productivity gains but may require some changes to your documentation process. Attached is a table showing former and new classification numbers (without the new additional worksections).

I encourage you to subscribe to the AUS-SPEC update service as it will assist in reducing the risks and costs associated with local government projects, as well as improve the quality of outcomes.

Yours sincerely

Richard Choy  
Chief Executive Officer  
rchoy@natspec.com.au

## NATIONAL CLASSIFICATION STRUCTURE



### FAQ

NATSPEC has agreed to provide the update service for AUS-SPEC commencing from the 2007 release in September. The 2007 release has re-structured AUS-SPEC into the national classification system, can be compiled with SPECbuilder, includes NATSPEC worksections where appropriate and has updated the references and Standards (some of which were 8 years out-of-date).

NATSPEC has no responsibility regarding pre-September 2007 licences and therefore assumes your past licence conditions still hold. Under the new licence, Subscribers may NOT distribute editable versions of AUS-SPEC to non-subscribers. Subscribers may provide their completed specification to all those involved in the project. The implication of this is that the subscriber shall take reasonable care to protect AUS-SPEC copyright by not distributing the specification in a manner that allows it to be downloaded by those not involved in the projects. It is recommended that if you wish to place pdf versions of your specification on your website, it needs to be within a secure section requiring registration. This does not necessitate individual password.

**Former and new AUS-SPEC Classification Numbers**

Former AUS-SPEC #	Former AUS-SPEC Specification No./Designation	Former AUS-SPEC Specification Title and Activity description	Maintenance Activity code	New National Classification No.	New/Modified Worksection Title	Location in New packages							
						AUS-SPEC Complete	AUS-SPEC Contracts	AUS-SPEC Urban and open spaces	AUS-SPEC Buildings	AUS-SPEC Roadworks and bridges	AUS-SPEC Public utilities	AUS-SPEC Maintenance (Non Parks)	
<b>Design Manual</b>													
DM	DQS	Quality Assurance Requirements for Design (includes comprehensive checklist system)		0010	Quality requirements for design	1	1	1	1	1	1	1	
DM	DM1	Geometric Road Design (Urban and Rural)		0041	Geometric road layout	1				1			
DM	DM2	Pavement Design		0042	Pavement design	1				1			
DM	DM3	Structures/Bridge Design		0061	Bridges and related structures	1				1			
DM	DM4	Subsurface Drainage Design		0043	Subsurface drainage (Design)	1				1	1		
DM	DM5	Stormwater Drainage Design		0074	Stormwater drainage (Design)	1				1	1		
DM	DM6	Site Regrading		0021	Site regrading	1		1		1			
DM	DM7	Erosion Control and Stormwater Management		0075	Control of erosion and sedimentation (Design)	1		1		1	1		
DM	DM8	Cycleway and Pathway Design		0044	Pathways and cycleways	1		1		1			
<b>AUS-SPEC #1 Development Design Specification Series.</b>													
1	DQS	Quality Assurance Requirements for Design		0010	Quality requirements for design	1	1	1	1	1	1	1	
1	D1	Geometric Road Design (Urban and Rural)		0041	Geometric road layout	1				1			
1	D2	Pavement Design		0042	Pavement design	1				1			
1	D3	Structures/Bridge Design		0061	Bridges and related structures	1				1			
1	D4	Subsurface Drainage Design		0043	Subsurface drainage (Design)	1				1	1		
1	D5	Stormwater Drainage Design		0074	Stormwater drainage (Design)	1				1	1		
1	D6	Site Regrading		0021	Site regrading	1		1		1			
1	D7	Erosion Control and Stormwater Management		0075	Control of erosion and sedimentation (Design)	1		1		1	1		
1	D8	Waterfront Development		0012	Waterfront development	1		1					
1	D9	Cycleway and Pathway Design		0044	Pathways and cycleways	1		1		1			
1	D10	Bushfire Protection		0013	Bushfire protection	1		1					
1	D11	Water Reticulation		0071	Water supply - reticulation and pump stations (Design)	1					1		
1	D12	Sewerage System		0076	Sewerage systems - reticulation and pump stations (Design)	1					1		
<b>AUS-SPEC #1 Development Construction Specification Series.</b>													
1	CQS	Quality System Requirements		0161	Quality (Construction)	1	1	1	1	1	1	1	
1	CQC	Quality Control Requirements		0161	Quality (Construction)	1	1	1	1	1	1	1	
1	C101	General		0136	General requirements (Construction)	1		1	1	1	1	1	
1	C201	Control of Traffic		1101	Control of traffic	1		1		1	1		
1	C211	Control of Erosion and Sedimentation		1102	Control of erosion and sedimentation (Construction)	1		1		1	1		
1	C212	Clearing and Grubbing		1111	Clearing and grubbing	1		1		1			
1	C213	Earthworks		1112	Earthworks (Roadways)	1				1	1		
1	C220	Stormwater Drainage - General		1351	Stormwater drainage (Construction)	1				1	1		
1	C221	Pipe Drainage		1352	Pipe drainage	1				1	1		
1	C222	Precast Box Culverts		1353	Precast box culverts	1				1	1		
1	C223	Drainage Structures		1354	Drainage structures	1				1	1		
1	C224	Open Drains including Kerb & Gutter (Channel)		1121	Open drains, including kerb and channel (gutter)	1				1	1		
1	C230	Subsurface Drainage - General		1171	Subsurface drainage	1				1	1		
1	C231	Subsoil and Foundation Drains		1172	Subsoil and foundation drains	1				1	1		
1	C232	Pavement Drains		1173	Pavement drains	1				1	1		
1	C233	Drainage Mats		1174	Drainage mats	1				1	1		
1	C241	Stabilisation		1113	Stabilisation	1				1	1		
1	C242	Flexible Pavements		1141	Flexible pavements	1				1			
1	C244	Sprayed Bituminous Surfacing		1143	Sprayed bituminous surfacing	1				1			
1	C245	Asphaltic Concrete		1144	Asphaltic concrete (Roadways)	1				1			
1	C247	Mass Concrete Subbase		1132	Mass concrete subbase	1				1			
1	C248	Plain or Reinforced Concrete Base		1133	Plain and reinforced concrete base	1				1			

**Former and new AUS-SPEC Classification Numbers**

Former AUS-SPEC #	Former AUS-SPEC Specification No./Designation	Former AUS-SPEC Specification Title and Activity description	Maintenance Activity code	New National Classification No.	New/Modified Worksection Title	Location in New packages							
						AUS-SPEC Complete	AUS-SPEC Contracts	AUS-SPEC Urban and open spaces	AUS-SPEC Buildings	AUS-SPEC Roadworks and bridges	AUS-SPEC Public utilities	AUS-SPEC Maintenance (Non Parks)	
1	C254	Segmental Paving		1145	Segmental paving	1					1		
1	C255	Bituminous Microsurfacing		1146	Bituminous slurry surfacing	1					1		
1	C261	Pavement Markings		1191	Pavement markings	1					1		
1	C262	Signposting		1192	Signposting	1					1		
1	C263	Guide Posts		1193	Guide posts	1					1		
1	C264	Guardfence (Guardrail)		1194	Non-rigid safety barrier systems	1					1		
1	C265	Boundary Fencing		1195	Boundary fences for road reserves	1					1		
1	C271	Minor Concrete Works		0319	Minor concrete works	1		1	1	1	1	1	
1	C273	Landscaping		0257	Landscape - roadways and street trees	1		1		1	1		
1	C401	Water Reticulation		1341	Water supply - reticulation and pump stations (Construction)	1						1	
1	C402	Sewerage System		1361	Sewerage systems - reticulation and pump stations (Construction)	1						1	
1	C501	Bushfire Protection (Perimeter Tracks)		0281	Bushfire perimeter tracks	1		1		1			1
<b>AUS-SPEC #2 Asset Owners Roadworks Specifications.</b>													
<b>QUALITY SYSTEM</b>													
2	QS	Quality System Requirements		0161	Quality (Construction)	1	1	1	1	1	1	1	1
2	QC	Quality Control Requirements		0161	Quality (Construction)	1	1	1	1	1	1	1	1
<b>GENERAL REQUIREMENTS</b>													
2	100	General (Includes Site Facilities Environmental Requirements Utilities and Authorities)		0136	General requirements (Construction)	1		1	1	1	1	1	1
<b>ROAD AND EARTHWORKS</b>													
2	200	Control of Traffic		1101	Control of traffic	1		1		1	1		
2	211	Control of Erosion and Sedimentation		1102	Control of erosion and sedimentation (Construction)	1		1		1	1		
2	212	Clearing and Grubbing		1111	Clearing and grubbing	1		1		1			
2	213	Earthworks		1112	Earthworks (Roadways)	1				1	1		
<b>STORMWATER DRAINAGE</b>													
2	220	Stormwater Drainage - General		1351	Stormwater drainage (Construction)	1				1	1		
2	221	Pipe Drainage (RC, FRC, Steel, uPVC)		1352	Pipe drainage	1				1	1		
2	222	Precast Box Culverts		1353	Precast box culverts	1				1	1		
2	223	Drainage Structures		1354	Drainage structures	1				1	1		
2	224	Open Drains, including Kerb & Gutter (Channel)		1121	Open drains, including kerb and channel (gutter)	1				1	1		
2	229	Kerb & Gutter (Channel) Replacement		1122	Kerb and channel (gutter) replacement	1				1	1		
<b>SUB-SURFACE DRAINAGE</b>													
2	230	Sub-Surface Drainage - General		1171	Subsurface drainage	1				1	1		
2	231	Subsoil and Foundation Drains		1172	Subsoil and foundation drains	1				1	1		
2	232	Pavement Drains (s/p, intra pavement, edge)		1173	Pavement drains	1				1			
2	233	Drainage Mats		1174	Drainage mats	1				1	1		
<b>PAVEMENTS</b>													
2	241	Stabilisation		1113	Stabilisation	1				1	1		
2	242	Flexible Pavements		1141	Flexible pavements	1				1			
2	243	Bituminous Cold Mix		1142	Bituminous cold mix	1				1			
2	244	Sprayed Bituminous Surfacing		1143	Sprayed bituminous surfacing	1				1			
2	245	Asphaltic Concrete		1144	Asphaltic concrete (Roadways)	1				1			
2	246	Rolled Concrete Subbase		1131	Rolled concrete subbase	1				1			
2	247	Mass Concrete Subbase		1132	Mass concrete subbase	1				1			
2	248	Plain or Reinforced Concrete Base		1133	Plain and reinforced concrete base	1				1			
2	249	Steel Fibre Reinforced Concrete Base		1134	Steel fibre reinforced concrete base	1				1			

**Former and new AUS-SPEC Classification Numbers**

Former AUS-SPEC #	Former AUS-SPEC Specification No./Designation	Former AUS-SPEC Specification Title and Activity description	Maintenance Activity code	New National Classification No.	New/Modified Worksection Title	Location in New packages						
						AUS-SPEC Complete	AUS-SPEC Contracts	AUS-SPEC Urban and open spaces	AUS-SPEC Buildings	AUS-SPEC Roadworks and bridges	AUS-SPEC Public utilities	AUS-SPEC Maintenance (Non Parks)
2	250	Continuously Reinforced Concrete Base		1135	Continuously reinforced concrete base	1				1		
2	251	Cold Milling of Asphalt & Base Course		1136	Cold milling of asphalt and base course	1				1		
2	254	Segmental Paving		1145	Segmental paving	1				1		
2	255	Bituminous Microsurfacing		1146	Bituminous slurry surfacing	1				1		
<b>ROAD FURNISHINGS</b>												
2	261	Pavement Markings		1191	Pavement markings	1				1		
2	262	Signposting		1192	Signposting	1				1		
2	263	Guide Posts		1193	Guide posts	1				1		
2	264	Guardfence (Guardrail)		1194	Non-rigid safety barrier systems	1				1		
2	265	Boundary Fencing		1195	Boundary fences for road reserves	1				1		
2	267	Concrete Safety Barrier		1163	Rigid road safety barrier systems	1				1		
<b>MISCELLANEOUS</b>												
2	271	Minor Concrete Works		0319	Minor concrete works	1		1	1	1	1	
2	273	Landscaping		0257	Landscape - roadways and street trees	1		1		1		
2	274	Masonry Walls		0292	Masonry walls	1		1		1		
2	276	Crib Retaining Walls		0293	Crib retaining walls	1		1		1		
<b>SERVICES</b>												
2	300 303	Service Conduits		1391	Service conduits	1		1		1	1	
2	305	Trenchless Conduit Installation		1392	Trenchless conduit installation	1		1		1	1	
2	306	Road Openings and Restorations includes: Footpath Road Pavements		1151	Road openings and restoration	1				1		
				1152	Road openings and restoration (Utilities)	1				1		
<b>AUS-SPEC #3 Standard Contract Documents</b>												
3	1	Guidelines for Principals		TG102	Guidelines for principals - standard contracts	1	1	1	1	1	1	1
				0125	Standard contract checklists	1	1	1	1	1	1	1
3	2	Information for Tenderers		0122	Information for tenderers	1	1	1	1	1	1	1
3	3	Conditions of Tendering		0123	Conditions of tendering	1	1	1	1	1	1	1
3	4	Conditions of Contract		0147	Conditions of contract (AUS-SPEC)	1	1	1	1	1	1	1
3	5	Tender Submission Documents		0124	Tender submission documents	1	1	1	1	1	1	1
<b>AUS-SPEC #4 Road Reserve Maintenance</b>												
4	1	Guide to Use			AUS-SPEC Quickstart Guide	1	1	1	1	1	1	1
4	2	Technical Specification		1601	Technical specification for road reserves	1	1			1		1
4	3	Activity Specifications and Activity Contract Requirements		TG405	Guide to road reserve maintenance management model and documentation	1	1			1	1	1
				0166	Road reserve management plan requirements	1	1			1		1
4	4	Guidelines for the Preparation of Maintenance Management Plans		TG406	Guide to road reserve management plans	1	1			1	1	1
				0166	Road reserve management plan requirements	1	1			1		1
4	5	Supplements for Contract Documentation		TG407	Guide to adapting asset delivery documentation to road reserve maintenance	1	1			1	1	1
				0156	Contract schedules for road reserves	1	1			1	1	1
		<b>Activity Description</b>		<b>Activity Code</b>								
<b>PAVEMENT</b>												
4		Emergency Pavement Repairs	PER	1623	Emergency pavement repairs	1				1		1
4		Repairs to Bituminous Surfacing	PBS	1613	Repairs to bituminous surfacing	1				1		1
4		Pavement Sweeping	PSW	1611	Pavement sweeping	1				1		1

**Former and new AUS-SPEC Classification Numbers**

Former AUS-SPEC #	Former AUS-SPEC Specification No./Designation	Former AUS-SPEC Specification Title and Activity description	Maintenance Activity code	New National Classification No.	New/Modified Worksection Title	Location in New packages						
						AUS-SPEC Complete	AUS-SPEC Contracts	AUS-SPEC Urban and open spaces	AUS-SPEC Buildings	AUS-SPEC Roadworks and bridges	AUS-SPEC Public utilities	AUS-SPEC Maintenance (Non Parks)
4		Pothole Repair	PPR	1620	Pothole repair	1					1	1
4		Local Shape Correction	PSC	1615	Local shape correction	1				1		1
4		Crack Sealing	PCS	1614	Crack sealing	1				1		1
4		Patching – Minor	PMP	1619	Minor patching	1				1		1
4		Patching – Heavy	PHP	1618	Heavy patching	1				1		1
4		Concrete Pavement Repairs	PCR	1621	Concrete pavement repairs	1				1		1
4		Concrete Slab Stabilisation	PSS	1622	Concrete slab stabilisation	1				1		1
4		Grading Unsealed Roads	PGU	1616	Grading unsealed roads	1				1		1
4		Resheeting Unsealed Roads	PRU	1617	Resheeting unsealed roads	1				1		1
4		Auxiliary Work for Reseals	PAW	1612	Auxiliary work for reseals	1				1		1
<b>SHOULDER</b>												
4		Edge Break Repair	SEB	1631	Edge break repair	1				1		1
4		Local Scour Repair	SSR	1634	Local scour repair	1				1		1
4		Grading Unsealed Shoulders	SGU	1632	Grading unsealed shoulders	1				1		1
4		Resheeting Unsealed Shoulders	SRU	1633	Resheeting unsealed shoulders	1				1		1
<b>DRAINAGE</b>												
4		Clear Culverts and Pits	DCP	1852	Clear open space and drainage culverts	1		1			1	1
4		Clear Open Drains	DOD	1652	Clear road reserve open drains	1				1	1	1
4		Clear Subsoil Drains	DSD	1651	Clear roadway subsoil drains	1				1	1	1
4		Minor Repair Lined Drains	DLD	1854	Minor repair of road reserve lined drains	1		1		1	1	1
<b>ROADSIDE</b>												
4		Boundary Fence Repair	RBF	1671	Road reserve boundary fence repair	1		1		1		1
4		Street and Gutter Litter Collection	RLC	1691	Road reserve litter collection	1				1		1
4		Footpath, Kerb and Gutter Repairs	RFK	1433	Footpath and kerb ramp repairs	1		1		1		1
			RFK	1641	Kerb and channel (gutter) repairs	1				1		1
4		Traffic Island Maintenance	RTI	1642	Traffic island	1				1		1
4		Fence and Handrail Maintenance	RMF	1672	Road reserve fences and handrails	1		1		1		1
4		Seat and Shelter Maintenance	RSS	1673	Street seats and bus shelter	1		1		1		1
4		Tree and Vegetation Control	RVC	1413	Tree and vegetation control in road reserves	1		1		1		1
4		Street Landscaping Maintenance	RLM	1411	Street landscaping	1		1		1		1
4		Weed Spraying/Treatment	RWS	1414	Weed control in road reserves	1		1		1		1
4		Mowing	RMO	1412	Grass mowing in road reserves	1		1		1		1
<b>ROAD FURNITURE</b>												
4		Maintenance of Delineators	FDE	1674	Carriageway delineators	1				1		1
4		Regulatory, Warning and Standard Signs	FRW	1676	Road reserve signs	1				1		1
4		Guide Signs	FGS	1677	Road reserve guide signs	1				1		1
4		Guardfence Maintenance	FGF	1675	Roadway guard fence	1				1		1
<b>MISCELLANEOUS</b>												
4		Emergency Call Out	MEC	1682	Road reserve emergency call out	1				1		1
4		Accident Repairs (Recoverable)	MAD	1681	Accident repairs (Recoverable)	1				1		1
4		Storm Damage Response	MSD	1683	Storm damage response for road safety	1				1	1	1
4		Graffiti Removal	MGR	1692	Removal of graffiti visible from roads	1				1		1
<b>AUS-SPEC #5 Development Period Supply and Service Contracts</b>												
5	1	Guidelines for Principals		TG103	Guidelines for principals - period supply and service contracts	1	1	1	1	1	1	1
					0126	Period supply and service checklists	1	1	1	1	1	1
5	2	Contract Preparation Model		0120	Pre-tendering contract preparation	1	1	1	1	1	1	1
5	3	Quality System Requirements		0162	Quality (Supply)	1	1	1	1	1	1	1
5				0163	Quality (Delivery)	1	1	1	1	1	1	1
5		Technical Specification for supply		0134	General requirements (Supply)	1	1	1	1	1	1	1
5		Technical Specification for service		0135	General requirements (Services)	1	1	1	1	1	1	1
5	4	Sample Contract 1		TG104	Guidelines for principals - sample contracts	1	1	1	1	1	1	1
5	5	Sample Contract 2		TG104	Guidelines for principals - sample contracts	1	1	1	1	1	1	1
<b>AUS-SPEC # 6A Parks and Recreation Area Maintenance</b>												
6A	1	Guide to Use			AUS-SPEC Quickstart Guide	1	1	1	1	1	1	1

**Former and new AUS-SPEC Classification Numbers**

Former AUS-SPEC #	Former AUS-SPEC Specification No./Designation	Former AUS-SPEC Specification Title and Activity description	Maintenance Activity code	New National Classification No.	New/Modified Worksection Title	Location in New packages						
						AUS-SPEC Complete	AUS-SPEC Contracts	AUS-SPEC Urban and open spaces	AUS-SPEC Buildings	AUS-SPEC Roadworks and bridges	AUS-SPEC Public utilities	AUS-SPEC Maintenance (Non Parks)
6A	2	Technical Specification		1401	Technical specifications for parks and recreation areas	1	1	1				
6A	3	Activity Specifications		TG401	Guide to parks and recreation areas maintenance management model and documentation	1	1	1			1	
6A	4	The Contract Park Maintenance Plan		TG402	Guide to adapting asset delivery documentation to parks and recreation areas maintenance	1	1	1			1	
				0164	Parks and recreation areas management plan	1	1	1				
6A	5	Supplements for Contract Documentation		0154	Contract schedules for parks and recreation areas	1	1	1			1	
<b>HORTICULTURAL ENVIRONMENT</b>												
6A		Planting of Annuals and Trees	HAT	1416	Planting of annuals and trees	1		1				
6A		Care of Trees and Shrubs	HCT	1417	Care of trees and shrubs	1		1				
6A		Garden Maintenance	HGM	1418	Gardens	1		1				
6A		Care of Grass and Turf	HGT	1419	Care of grass and turf	1		1				
6A		Grass Mowing	HMO	1420	Grass mowing	1		1				
6A		Native Bushland Maintenance	HNB	1421	Native bushland	1		1				
6A		Pest Control	HPC	1423	Pest control	1		1				
6A		Dunal Area Maintenance	HSD	1422	Dunal area	1		1				
6A		Weed Treatment	HWS	1415	Weed control	1		1				
<b>BUILT ENVIRONMENT</b>												
6A		Barbecue Maintenance	BBC	1471	Barbecue	1		1				
6A		Boundary Fence Repair	BBF	1462	Boundary fence repair	1		1				
6A		Bituminous Surfacing Repairs	BBS	1441	Bituminous surfacing repairs	1		1				
6A		Drinking Fountain Maintenance	BDF	1472	Drinking fountains	1		1				
6A		Fence and Handrail Maintenance	BFH	1473	Barriers	1		1				
6A		Footpath Paving Repairs	BFP	1431	Footpath paving repairs	1		1		1		
6A		Gravel Footpath Repairs	BGF	1432	Gravel footpath repairs	1		1				
6A		Irrigation System Maintenance	BIS	1841	Water supply - irrigation systems	1		1			1	1
6A		Lighting Maintenance	BLI	1474	Lighting	1		1				
6A		Playground Equipment Maintenance	BPE	1475	Playground equipment	1		1				
6A		Park Furniture Maintenance	BPF	1476	Park furniture	1		1				
6A		Boat Ramp Maintenance	BRP	1442	Boat ramps	1		1			1	1
6A		Sportsground Facilities Maintenance	BSG	1477	Sportsground facilities	1		1				
6A		Swimming Enclosure Maintenance	BSW	1461	Swimming enclosure	1		1			1	1
6A		Wharf and Deck Maintenance	BWD	1701	Wharves and decks maintenance	1		1		1	1	1
<b>CLEANING OPERATIONS</b>												
6A		Beach Cleaning	CBE	1881	Beach cleaning	1		1		1	1	1
6A		Clear Drainage Culverts	CDC	1853	Clear roadway culverts and pits	1		1		1	1	1
6A		Graffiti Removal	CGR	1492	Open space graffiti removal	1		1			1	1
6A		Litter Collection	CLC	1491	Open space litter collection	1		1			1	1
6A		Clear Open Drains	COD	1851	Clear open space and drains	1		1			1	1
<b>MISCELLANEOUS</b>												
6A		Accident Repairs (Recoverable)	MAR	1481	Accident repairs (Recoverable)	1		1			1	
6A		Accident/Vandalism Repairs (Non- Recoverable)	MAV	1482	Accident repairs (Non recoverable)	1		1			1	
6A		Emergency Call Out	MEC	1483	Emergency call out	1		1			1	
6A		Storm Damage Response	MSD	1484	Storm damage response	1		1			1	
<b>AUS-SPEC # 6B Buildings and Facilities Maintenance</b>												
6B	1	Guide to Use			AUS-SPEC Quickstart Guide	1	1	1	1	1	1	1
6B	2	Technical and Activity Specifications		1501	Technical specifications for buildings and facilities	1	1	1	1		1	1
				TG403	Guide to buildings and facilities maintenance management model and documentation	1	1	1	1			1
6B	3	NATSPEC Reference Specifications			NATSPEC BASIC package	1		1			1	
6B	4	The Contract Building and Facilities Maintenance Plan (BFMP)		0165	Buildings and facilities maintenance plan	1	1	1	1		1	1

Former and new AUS-SPEC Classification Numbers

Former AUS-SPEC #	Former AUS-SPEC Specification No./Designation	Former AUS-SPEC Specification Title and Activity description	Maintenance Activity code	New National Classification No.	New/Modified Worksection Title	Location in New packages						
						AUS-SPEC Complete	AUS-SPEC Contracts	AUS-SPEC Urban and open spaces	AUS-SPEC Buildings	AUS-SPEC Roadworks and bridges	AUS-SPEC Public utilities	AUS-SPEC Maintenance (Non Parks)
				TG404	Guide to adapting asset delivery documentation to buildings and facilities maintenance	1	1		1		1	1
6B	5	Supplements for Contract Documentation		0155	Contract schedules for buildings and facilities	1	1		1		1	1
<b>CLEANING</b>												
6B		Internal Building Cleaning	CIB	1586	Internal cleaning	1			1			1
6B		External Building Cleaning	CEB	1585	External cleaning	1			1			1
6B		Window Cleaning	CWI	1588	Window cleaning	1			1			1
6B		Sanitary Cleaning	CSA	1587	Sanitary cleaning	1			1		1	1
6B		Cleaning & Blinds and Fire-proofing of Curtains	CCB	1589	Cleaning - blinds and fire proofing of curtains	1			1			1
<b>MAINTENANCE COMPONENT</b>												
6B		Walls	W	1532	Walls	1			1			1
6B		Floors	F	1531	Floors	1			1			1
6B		Ceiling	C	1534	Ceilings	1			1			1
6B		Roofing	R	1535	Roofing	1			1			1
6B		Doorways/Windows	D	1533	Doorways and windows	1			1			1
6B		Hydraulic Systems	H	1572	Hydraulic systems	1			1		1	1
6B		Electrical Systems	E	1573	Electrical systems	1			1		1	1
6B		Mechanical Systems	M	1571	Mechanical systems	1			1		1	1
<b>MISCELLANEOUS</b>												
6B		Emergency Call Out	MEL	1583	Emergency call out	1			1		1	1
6B		Accident Repairs (Recoverable)	MAR	1582	Accident repairs management (Recoverable)	1			1		1	1
6B		Storm Damage Response	MSD	1584	Storm damage response	1			1		1	1
						223	39	93	48	158	100	98