

DEVELOPING A CONTRACT DOCUMENT SYSTEM USING AUS-SPEC

Nandini Mehta, AUS-SPEC Manager, NATSPEC

Abstract

Every Council uses contracts for ongoing supply and services related to their general operations, community services and the construction and maintenance of assets. AUS-SPEC standard contract documents have been prepared for local government works and reflect the terminology and particular requirements of local government in Australia. Procedures for easy compilation, preparation and management of contract documents are included. AUS-SPEC packages include design, construction and maintenance worksections for each asset group. AUS-SPEC provides a range of specifications for buildings, roadworks, urban and open spaces and public utilities. The system supports technical and contractual consistency between Councils yet allows flexibility to edit and add project specific requirements where necessary. AUS-SPEC's main aim is to improve the quality of construction and maintenance in Australia.

Key Words: Assets, Contract, Construction, Design, Documentation, Local Government, Maintenance, Quality, Specification

Introduction

AUS-SPEC provides a national document system that enables consistency and a uniform approach to design decisions, construction and maintenance for buildings and minor civil works across Australia. It was developed by the Institute of Public Works Engineering (IPWEA) and is now updated by NATSPEC.

AUS-SPEC standard contract documents have been prepared specifically for local government works and reflect the terminology and the particular requirements of local government in Australia. They are suitable for documenting local roads, stormwater drainage, water and sewerage systems, urban and open spaces and community buildings.

There are a number of different procurement methods used to deliver capital works projects including traditional, design and construct and management. The AUS-SPEC system is flexible and can be used for different procurement methods.

Need for contract documentation

Various industry organisations like IPWEA, Civil Contractors Federation (CCF) and government departments have identified that the packaging of contract documents has to be addressed collectively to achieve efficiencies in the delivery of infrastructure projects. There are inconsistencies across local governments in relation to technical specifications, tendering and contract management practices. According to the CRC Construction Innovation, *Guide to leading practice for dispute avoidance and resolution*, the Australian economy spends approximately \$7 billion per annum to resolve disputes in the construction industry. Concerns exist including the cost of tendering, lack of clarity of documentation and unequal allocation of risk. CRC suggests that disputes can be minimised by selecting a project delivery mechanism and contractual framework that reflects sensible risk allocation and with the delegation of authority to solve problems quickly.

The AUS-SPEC contract document system has significant benefits as it provides a consistent framework for the compilation of contract documentation defining:

- Outputs
- Standards compliance
- Method of payments
- Risks
- Procedures, roles and responsibilities
- Dispute resolution process.

Project delivery

Project delivery includes all of the activities required to complete the project which comprise project planning, project management, environmental assessment, design and construction. AUS-SPEC addresses the following different stages of a project:

- Project initiation
- Project delivery (includes project brief, governance, delivery and delivery plan)
- Operation and asset management.

AUS-SPEC documents assist in defining the different stages of project delivery to provide a clear project scope and a solid platform for quality design documentation for the selected procurement system.

Procurement

Requirements must be defined and specifications written clearly and unambiguously before proceeding with any procurement, so that prospective suppliers/contractors can offer to provide the goods, services, or works as requested by the Local Government Councils.

Basic principles applying to all procurement, irrespective of the value and complexity of that procurement include:

- Value for money

- Open and fair competition
- Accountability
- Risk management
- Probity and transparency.

Procurement strategy

The most appropriate procurement strategy should be selected to align with the key objectives and constraints of the project, deal with the identified risks and suit the level of complexity.

In order to consider and adopt a project delivery strategy for capital works projects, a procurement system is selected from the following:

- Traditional (separated) e.g. In-house; Design only and construct only
- Design and construct (integrated) e.g. Design; Novate and construct; Design, construct and maintain
- Management (packaged) e.g. Design and build; Design, build and operate
- Collaborative (relational) e.g. Alliance; Public Private Partnership.

The AUS-SPEC documents provide assistance in:

- Selection of appropriate procurement and contracting strategies, and nomination of appropriate responsibilities in the contracts
- Preparation of tender documents and contracts based on standard forms
- Selection of contractors and consultants with proven performance records
- Effective management of contracts, including clause commentaries, sample forms and checklists
- Maintenance of an effective performance management system through monitoring and reporting
- Resolution of contractual claims and disputes.

AUS-SPEC Contracts worksections

The AUS-SPEC Contracts worksections contain umbrella requirements and are integrated into all of the following AUS-SPEC packages:

- Complete
- Urban and open spaces
- Buildings
- Roadways and Bridges
- Public utilities (including water supply, sewerage systems and stormwater drainage)
- Maintenance (Non parks).

Each package consists of individual worksections for carrying out a particular design, construction or maintenance activity.

Design worksections

AUS-SPEC design worksections form a basis for the creation of uniform design processes for civil infrastructure works.

These worksections can be used for Council capital works as well as developmental works. The *0010 Quality requirements for design* worksection outlines the quality assurance requirements of design and a comprehensive checklist system to:

- Inform designers of the design criteria.
- Provide a record of the design processes.
- Allow flexibility of additional design criteria to be integrated into the process as necessary.

Construction worksections

AUS-SPEC Construction worksections provide specifications for both Quality control and Integrated management systems Contracts associated with most Councils' engineering activities. These worksections have been developed for Councils in controlling the quality of works performed by contractors and developers.

Maintenance worksections

The AUS-SPEC maintenance management procedures provide Councils with records of asset inspections, defects, programmed and prioritised works and monthly 'works-as-executed' reports, which continually improve a Council's maintenance history and asset inventory and also provide the required records as a defence against litigation.

The main components of a Maintenance worksection are:

- Maintenance management plans to provide an appropriate and effective methodology towards quality management where the Council provides the Maintenance Management Plan for the Contractor. A maintenance defect register records the defects found during programmed inspections and is an essential part of asset management.
- Activity specifications to provide a list of specifications covering the work. The scheduled activity specifications define the scope and performance requirements of each task.
- Activity Contract requirements to provides a series of Council nominated distress levels, response times and compulsory intervention levels to allow control of the level and timeliness of the repairs or maintenance.

An important part of the AUS-SPEC maintenance contract model is defining and reporting on performance parameters such as 'distress' to be rectified (e.g. footpath trip slab or pot hole), or the 'need' for remedial action (e.g. impeded open drain or long grass on footpath). A series of forms control the process of management and payment work in parallel with the specifications.

Quality management

AUS-SPEC document systems are designed to address quality management by encouraging the service provider, to identify and correct process faults and thereby

assure the purchaser of good quality and productivity.

Contract management

The AUS-SPEC Contract management system includes activities that follow on from the establishment of the contract, including administration throughout the contract period, which helps to make sure that the terms of a contract are met and that the expected value is achieved.

In addition to the legislative and policy framework, there are a number of factors that are important at all stages of the contracting process. These are:

- Managing risks
- Managing relationships
- Managing resources
- Specifying responsibilities
- Behaving ethically
- Keeping records.

Contract administration is the last stage of the tendering and contract cycle, and includes all administrative duties associated with a contract after formation, including contract review, contract variation, and contract transition. The AUS-SPEC contract document system assists users to manage each stage of the contract cycle from project initiation, project delivery, compilation of contract documents, contract management and contract administration through to operation, maintenance and asset management.

Contract documents

The appropriate Government Codes of Practice and Codes of Tendering underpin the detailed tendering process and procedures used by Councils.

The following AUS-SPEC worksections are required as a base for a contract preparation procedure within the Council:

- AUS-SPEC TECHguides

- *0120 Pre-tendering contract preparation*
- *0122 Information for tenderers*
- *0123 Conditions of tendering*
- *0124 Tender submission documents*
- *0147 Conditions of contract.*

AUS-SPEC TECHguides

AUS-SPEC TECHguides provide roadmaps for compiling the documentation required for local government projects. They include information on contracts, technical specifications, tender submission requirements and sample contract documents. They should be read before commencing a project. The TECHguides provide information to improve the method of production and the management of contract documentation.

The AUS-SPEC TECHguides aim to assist in the preparation of a comprehensive contract document so that the Tenderers are aware of the requirements and risk apportionment to them by the principal.

AUS-SPEC TECHguides - General

TG101 Guidelines for compiling documentation for contracts .

This TECHguide describes the procedures for developing and compiling documentation using the AUS-SPEC system for contracts. This TECHguide is attached at the end of this paper for reference.

TG102 Guidelines for Principals – standard contracts.

This TECHguide describes procedures for the production and management of comprehensive documentation for standard contracts. It addresses the contracting process, the compilation of contract documents and the tender process.

TG103 Guidelines for Principals - period supply and service contracts.

This TECHguide describes the documentation procedures for period supply and service contracts for the supply of materials and services required for local government.

TG104 Guidelines for Principals – sample contracts.

This TECHguide includes three sample contract documents to demonstrate contract documentation for different types of projects using the AUS-SPEC Local Government specification system. The sample contracts included are for supply, delivery and placement of sprayed bituminous surfacing; construction of a road and external surveillance services.

Period contracts (typically annual contracts) can be of several types. They differ in the following aspects:

- Extent of service (provision of service e.g. weed spraying or debt recovery service). The supply contracts can be Supply Only, Supply and Deliver, Supply, Deliver and Install/Lay/Place.
- Type of contract control: Quality assured contract or an integrated management contract.
- Period of contract: Duration of the contract e.g. 12 months.
- Method of payment: Schedule of Rates or Lump Sum or Combination of Lump Sum and Schedule of Rates or Combination of Lump Sum, Schedule of Rates and Daywork Rates or others.

The extent of service is described in the Information for Tenderers and the Technical Specification for construction.

AUS-SPEC TECHguides - Maintenance

These guides address the philosophy behind the creation and development of a specification for maintenance management of Council assets. The model is based on quality, competitive principles and program maintenance. This reflects the move from predominantly direct control responsive

maintenance operations to execution by competitive maintenance contracts, either by Council's own business units or private contractors. The TECHguides for adapting asset delivery provide a supplementary set of issues as a checklist to enable each Council to consider the individual issues in light of the provisions within Council's adopted *General conditions of contract*.

AUS-SPEC has the following TECHguides for maintenance works:

TG 401 Guide to parks and recreation areas maintenance management model and documentation.

TG 402 Guide to adapting asset delivery documentation to parks and recreation areas maintenance.

TG 403 Guide to buildings and facilities maintenance management model and documentation.

TG 404 Guide to adapting asset delivery documentation to buildings and facilities maintenance.

TG 405 Guide to road reserve maintenance management model documentation.

TG 406 Guide to road reserve management plan.

TG 407 Guide to adapting asset delivery documentation to road reserve maintenance.

Compilation of contract documents

Section A Tender documents: Assemble worksections 0122 Information for tenderers and 0123 Conditions of tendering separately.

The tender information documents aims to clearly, logically, consistently and unambiguously define:

- Each type of work to be carried out
- Method of measurement and payment to be used
- Quality standards to be achieved
- General obligations to be met by the contracting parties.

The AUS-SPEC documents provide a suitable structure for local government tendering and can be amended and adapted to suit each tender. Each Council selects a tender method and process that suits the procurement system and level of risk, is timely, avoids creating unnecessary costs for tenderers and safeguards the security and confidentiality of all tenderers. The method of tendering can be any of the following:

- Open tendering
- Selected tendering
- Pre-registered (Selective tendering).

After the receipt of the tender documents and the opening of tender, the tenders are evaluated and accepted. Contract administration starts after the acceptance of tender.

Section B Contract documents: Assemble contract documentation in four volumes:

Volume 1: Conditions of contract (0147 Conditions of contract):

- General conditions of contract (e.g. AS 2124, AS 4000 or GC21)
- Annexure to General conditions of contract
- Special conditions of contract.

AUS-SPEC has prepared a listing of issues which impact on normal contract requirements and provides supplementary clauses or amendments suitable for contract documentation in the appropriate TECHguides. A checklist is provided to assist in making sure all considerations are explored.

Volume 2: Technical specifications: A detailed description in the Request for tender and Contract documents setting out the functional performance, material and other specific technical requirements for the required contract work, including for constructed works or built assets or other products (including goods) and/or services.

This volume will be a compilation of the appropriate AUS-SPEC worksections including:

- 0136 General requirements (Construction)
- 0161 Quality (Construction) or 0167 Integrated management as appropriate
- Specific worksections (required for the works).

Volume 3: Drawings and schedules:

Consists of the project drawings, standard drawings and schedules quantifying the service or product, compiled by Council's own resources. Indicative quantities for each pay item are provided in this section as a schedule of rates.

Volume 4: Tender submission documents (0123 Tender submission documents):

Comprise a series of forms and declarations which are required to be completed together with supporting information, requested by the Principal, demonstrating the tenderer's ability to carry out the works.

Associated documents: Includes geotechnical information, environmental protection agency information and Council's OH&S policy.

Conclusion

The AUS-SPEC contract document system provides specification templates which can be utilized for all Council services related to asset management. The documents can be customised to suit different procurement methods and different types of contracts. The AUS-SPEC document system can also be used as a project management tool and an asset management tool.

AUS-SPEC's approach makes sure consistent standards are maintained across the project and reduces the likelihood of variation claims.

References

Australian Government Department of Finance and Administration, (2007), *Developing and Managing Contracts - Getting the right outcome, paying the right price.*

AUS-SPEC TECHguides, (2011).

Austroads AGPD03, (2008), *Guide to project delivery - Contract management.*

CRC Construction Innovation, (2009), *Capital works procurement – The selection of a building procurement method.*

CRC Construction Innovation, (2010), *Guide to leading practice for dispute avoidance and resolution.*

Government of South Australia, *Procurement - Good Practice guide.*

Local Government Victoria, (2007), *Local government procurement – Best practice guideline.*

NSW Government, (2008), *Procurement practice guide – Contract management.*

Qld Department of public works, (2008), *Capital works management frameworks - Procurement strategy and contract selection.*

Victorian Civil Construction Industry, (2007), *Best practice guide for tendering and contract management.*

Government of Western Australia, (2010), Centre for Excellence and Innovation in Infrastructure Delivery, *Infrastructure Procurement Options Guide.*

Author Biography



Nandini Mehta is the AUS-SPEC Manager at NATSPEC, publisher of the National building specification of Australia. She has been responsible for the integration of AUS-SPEC specifications into the National Classification Structure. A civil/structural engineer by profession, she has been involved in the design and construction industry for over 15 years. Nandini joined NATSPEC as a Senior Engineer 7 years ago and has worked on various NATSPEC publications including TECHguides, TECHnotes, TECHreports and has developed a number of new specification worksections. Prior to joining NATSPEC she was a Design Engineer working in the Middle East on several prestigious projects in the UAE with many international organizations including Multiplex, Murray & Roberts, WS Atkins etc. She has a wide range of expertise in the construction of high rise buildings and civil works.

Postal Address: Nandini Mehta, Level 4, 217 Clarence Street, Sydney, NSW 2000

E-mail: nmehta@natspec.com.au

Website: www.natspec.com.au

Guidelines for compiling documentation for contracts

This TECHguide describes the procedures for developing and compiling documentation using the AUS-SPEC system for contracts.

Prepared by

NATSPEC

www.natspec.com.au



CONTENTS

1	General	3
1.1	Introduction.....	3
1.2	Referenced documents	3
2	contract requirements	4
2.1	Conditions of tendering.....	4
2.2	Conditions of contract.....	4
2.3	Quality management system	4
2.4	Method of payment.....	4
3	Management of Contract documentation	5
3.1	General	5
3.2	Management flow chart	6
4	Contract compilation	7
4.1	Contract documentation volumes table.....	7
4.2	Assembly and binding.....	8
4.3	Registration of document.....	8
4.4	Review of Council documentation (Major works).....	8
4.5	Security of documentation	8
4.6	Quality check.....	8
5	Compilation of Technical Specification	9
5.1	Select worksections required.....	9
5.2	Identify clauses not required	9
5.3	Identify subclauses not required	9
5.4	Complete all relevant write-in options.....	9
5.5	Edit standard text.....	9
5.6	Add Special Requirements	9
5.7	Complete job specific annexures to complement the specification	9
6	Annexure A - Checklist for Contract document compilation.....	10

GUIDELINES FOR COMPILING DOCUMENTATION FOR CONTRACTS

1 GENERAL

1.1 Introduction

This TECHguide is an overview of the compilation procedure for project contract documentation using the AUS-SPEC contract document system. AUS-SPEC addresses each stage of the contract cycle; project initiation; project delivery; compilation of contract documents; contract management and contract administration; operation; maintenance and asset management. Different types of contract documentation are applicable to the various services.

AUS-SPEC uses the term worksection to describe the foundation unit of the Technical Specifications. Before compiling the various worksections into the Technical Specifications, identify the following contract requirements for the project:

- Conditions of tendering: For tender documentation only.
- Conditions of contract: General conditions, Annexures and Special conditions of contract.
- Quality management system: Quality Assured or Integrated Management.
- Method of payment: Schedule of Rates or Lump Sum or a combination of both.

These requirements will have a bearing on the selection of the worksections from the GENERAL workgroup as well as the changes necessary for the other worksections so that they are compatible.

1.2 Referenced documents

Refer to NATSPEC TECHnote GEN 005 *Specifications* for an overview of the importance, roles and forms of specifications. The following documents are incorporated into this TECHguide by reference:

Worksections

- 0010 *Quality requirements for design.*
- 0123 *Conditions of tendering.*
- 0124 *Tender submission documents.*
- 0136 *General requirements (Construction).*
- 0147 *Conditions of contract.*
- 0161 *Quality (Construction).*
- 0167 *Integrated management.*

TECHguides

- TG102 *Guidelines for Principals - standard contracts.*
- TG103 *Guidelines for Principals - period supply and services contracts.*
- TG 104 *Guidelines for Principals – sample contracts.*

Standards

- AS 2124-1992 General conditions of contract
- AS 4120-1994 Code of tendering
- AS/NZS ISO 9000: 2006 Quality management systems – Fundamentals and vocabulary

GUIDELINES FOR COMPILING DOCUMENTATION FOR CONTRACTS

2 CONTRACT REQUIREMENTS

2.1 Conditions of tendering

The *0123 Conditions of tendering* worksection includes detail procedure for inviting, examining, assessing and accepting tenders. It reflects the principles of Australian codes of practice, including AS 4120 which is cited in the codes of practice of a number of state governments. This worksection does not form part of a contract. *The Government Codes of Practice* differs from state to state and can be found on local and state government websites. Refer to *TECHguide 102 Guidelines for principals-standard contracts*.

Relevant worksection: *0123 Conditions of tendering*.

Complete project specific information in *0123 Conditions of tendering* including: contract number, project title, address, quality management system and method of payment.

2.2 Conditions of contract

The *0147 Conditions of contract* worksection comprises a single set of general conditions of contract suitable for a wide variety of civil engineering, building, electrical and mechanical engineering and other types of construction contracts. This worksection is based on AS 2124. However, it can also be used for AS 4000, NPWC3 and GC21 standard contracts.

Relevant worksection: *0147 Conditions of contract*.

Complete project information in *0147 Conditions of contract* including: contract number, project title, address, quality management system and method of payment, General Conditions of contract applicable to the project, Annexures and Special conditions to the General conditions of contract.

2.3 Quality management system

2.3.1 Quality assured system

A quality assured contract requires that the implementation of all the planned activities within a Contractor's/Supplier's Quality management system which is required to conform to AS/NZS ISO 9000. The Contractor is required to submit a project specific Quality plan. Particular documentation is required during the tender process, with the remaining information generally required within 21 days of the date of tender acceptance.

Relevant worksection - Design: *0010 Quality requirements for design*.

Relevant worksection - Construction: *0161 Quality (Construction)*

2.3.2 Integrated Management system

An Integrated management contract requires the implementation of a Project management plan to make sure OH&S, environmental and quality control applies to all work under the contract, both on-site and off-site.

Typically control testing and surveys are arranged by the Contractor and the results are submitted to the Superintendent to demonstrate conformance to the requirements of the worksections. The cost of control testing as documented is met by the Contractor.

Relevant worksections: *0161 Quality (Construction)* and *0167 Integrated management*.

2.4 Method of payment

2.4.1 Schedule of Rates

A Schedule of Rates is applicable if individual activities in the work are well defined but the extent of work required may vary in quantity and/or time. Examples include bituminous sprayed sealing, pavement patching and landfill waste services. The Schedule of Rates can have provisional quantities where the accuracy is less certain.

All AUS-SPEC construction worksections are suitable for direct application to a Schedule of Rates Contract. **Pay items** are listed at the end of each worksection for reference to a Schedule of Rates for the estimated quantities provided in the tender documents.

Delete **Pay items** that are not required for the project from the Schedule of Rates.

Provide estimated quantities for **Pay items** within a range of $\pm 20\%$. Nominate specific prime cost items where this level of accepted accuracy is not available.

Each tender submission includes a Schedule of Rates completed with unit rates for the estimated quantities. These rates and quantities are used to produce the tender price.

GUIDELINES FOR COMPILING DOCUMENTATION FOR CONTRACTS

2.4.2 Lump Sum

A Lump Sum Contract is applicable if the work is well defined and significant variations in either quantities or the nature of the work are unlikely to occur, for example, road and recreational facilities construction. The Contractor is responsible for the following:

- Completing the works as documented for a total Contract Lump Sum price.
- The accuracy of the quantities involved in the works.

Each tender submission includes a priced Bill of quantities consisting of a price break-down for each significant item of work. This is used to assess the Tenderer's understanding of the works, as a guide for progress payments and the evaluation of variations.

Amend 0123 *Conditions of tendering* to advise tenderers to ignore any restriction on the use of Lump Sums and clarify the context for any references to Schedule of Rates, scheduled rate or deductions. Include the following text in the Technical specification for construction for Lump Sum Contracts:

This Contract is a Lump Sum Contract. Scheduled rates and Pay items mean components of the Lump Sum price. If a worksection allows for recognition of a deduction in payment, apply the percentage deduction to the cited Pay item component of the Lump Sum.

For a Lump Sum Contract, it is recommended that **Pay items** are included in the **MEASUREMENT AND PAYMENT, Pay items** clause/subclause of each worksection with the following text:

The Pay items listed in this worksection have no direct relevance to this Lump Sum Contract, except for the purpose of evaluating the quantum of progress payments and variations when the Pay items are included in the Bill of quantities. Additionally, the Pay items included below and in the Bill of quantities constitute a basis for the calculation of deductions when applicable.

2.4.3 Combination of Lump Sum and Schedule of Rates

A contract which combines Lump Sum and Schedule of Rates is applicable if part of the work is well defined and unlikely to vary in either the quantity or nature of the work. It may also be applicable to contracts containing separable parts, for example, a maintenance contract where establishment and management costs are annual Lump Sum and actual maintenance work is based on a Schedule of Rates.

2.4.4 Combination of Lump Sum, Schedule of Rates & Daywork rates

This is a variation to the above and is applicable if significantly different amounts of work may be required than indicated in the Schedule of Rates or if there are item(s) that cannot be forecast at the time of compiling the Schedule of Rates.

3 MANAGEMENT OF CONTRACT DOCUMENTATION

3.1 General

Implement a management procedure to make sure the compilation of contract documents is effective, efficient, and adequate to realise the commissioned Works in the assigned timeframe and budget, whether undertaken in-house or by external consultants. Assign the responsibility for supervision of conformance with an appropriate contracts policy and consistency across all contracts.

GUIDELINES FOR COMPILING DOCUMENTATION FOR CONTRACTS

3.2 Management flow chart

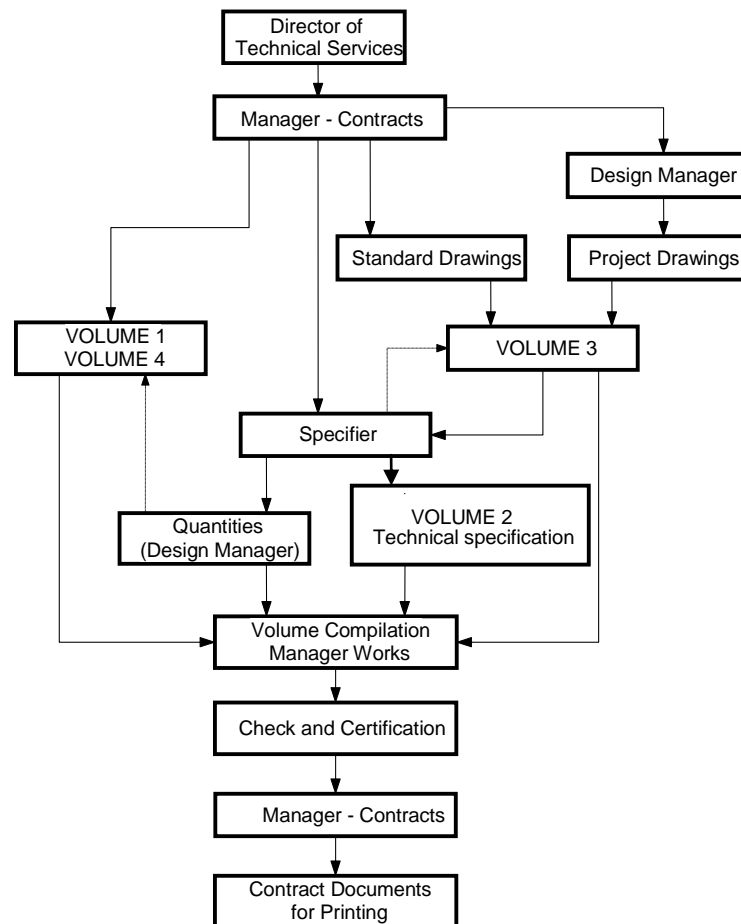


Figure1 Sequence of activities and personnel involvement required for the full contract document compilation

Note: This flow chart shows a typical example of the sequence of activities and personnel involvement required for the full contract document compilation using AUS-SPEC worksections.

Management titles may vary due to differing management structures, however, there generally will be professional officers in each organisation with one or more of the assigned responsibilities.

GUIDELINES FOR COMPILING DOCUMENTATION FOR CONTRACTS

4 CONTRACT COMPILATION

4.1 Contract documentation volumes table

Contract volumes	Include the following AUS-SPEC worksections and related documents	Notes
Volume 1 CONDITIONS OF CONTRACT	<i>0147 Conditions of contract</i>	This worksection outlines the general conditions of contract, the annexures to the contract and the special conditions of contract. The General conditions of contract (e.g. AS 2124) is included in the contract documents by reference in <i>0147 Conditions of contract</i> .
	Annexure to General conditions of contract	Pre printed forms of Annexure Part A and Part B for standard contracts are available from SAI Global.
	Special conditions of contract	
Volume 2 TECHNICAL SPECIFICATIONS	<i>General: 0136 General requirements (Construction)</i>	This worksection is applicable to the site requirements of the Principal and includes a description of the project, specific requirements, work not in the contract, site investigations, signage, survey control, environmental planning, noise and vibration controls, utilities and authorities and site facilities.
	<i>Quality: 0161 Quality (Construction) or 0167 Integrated management.</i>	Select worksections based on the Quality management system for the project. For quality assurance system: <i>0161 Quality (Construction)</i> . For integrated management system: <i>0161 Quality (Construction)</i> and <i>0167 Integrated management</i> .
	Specific requirements: Other worksections	Select other worksections as required. Refer to the National worksection matrix . Construction services: Workgroups 2, 3, 11 and 13. Maintenance services: Workgroups 14 -18.
Volume 3 DRAWINGS AND SCHEDULES	Project drawings	Separate compilation not covered by this guide.
	Standard drawings	
	Schedules	
Volume 4 TENDER SUBMISSION DOCUMENTS	<i>0124 Tender submission documents</i>	This worksection outlines the tender submission documents required for the contract such as: <ul style="list-style-type: none"> • Tender forms • Schedule of rates or Bill of quantities • Tenderer's particulars • Declarations. Separate compilation not covered by this guide.
ADDITIONAL INFORMATION		Associated documents not included in

GUIDELINES FOR COMPILING DOCUMENTATION FOR CONTRACTS

Contract volumes	Include the following AUS-SPEC worksections and related documents	Notes
DOCUMENTS		Volumes 1-4, for example: <ul style="list-style-type: none"> • Geotechnical information • Environmental protection agency information • Council's OH&S policy • Council Handbook (Water)

4.2 Assembly and binding

Assembly: Assemble the contract documentation in 4 volumes as outlined in **contract documentation volumes table**. Make sure the documents are free from discrepancies and omissions.

Volumes: Bind volumes separately.

Exhibit copies: Spiral bind and keep a record of different editions for legal and contractual reasons.

Working copies: Assemble in ring binders.

Associated documents: Bind separately without volume status to indicate their exclusion from the formal contract documents.

4.3 Registration of document

Assign a contract title and number to use consistently throughout project management and register the contract tender documents on the Council Contract Administration System.

Cite the contract title and number when arranging access to up-to-date worksections.

4.4 Review of Council documentation (Major works)

For projects with an estimated capital cost exceeding \$150,000, a party independent of the compilation team must complete the checklist in Annexure A of these guidelines.

4.5 Security of documentation

The Contracts Manager is responsible for the following:

- The security of all the copies of contract document components and plans.
- The avoidance any release of information in advance of formal release of tender documents.
- The securing of an electronic copy of all documentation in conformance with archiving policy.
- Certification that established contract documentation compilation procedures have been followed and that this has been verified by the independent check.

4.6 Quality check

ANNEXURE A of this guide provides a checklist proforma. Using this, review the compiled documents to ensure that they are:

- Appropriate for the scope and nature of the work.
- Expressed in plain English.
- Document requirements which are practical to build, to the program and budget.

Establish a Hold point on advertising for tenders until the execution of a satisfactory check of the contract documentation. Release the Hold point only on the authority of the Contracts Manager for a specific contract.

GUIDELINES FOR COMPILING DOCUMENTATION FOR CONTRACTS

5 COMPILATION OF TECHNICAL SPECIFICATION

5.1 Select worksections required

Use SPECbuilder Live to select the AUS-SPEC worksections applicable to the project and compile a draft specification.

The following material included in your AUS-SPEC package may be useful and can be found at www.natspec.com.au:

- National worksection matrix for a full list of worksections.
- Introductory Guidance text to each worksection for worksection applications.
- SPECbuilder Live Guide for step-by-step instructions on using the SPECbuilder Live specification compilation software.
- Specification Word Processing and Production for more information on using Microsoft Word for AUS-SPEC specifications.

5.2 Identify clauses not required

Identify and delete clauses which are not required for a particular contract. Clauses are cross-referenced in the worksection text by **CLAUSE TITLE** only. Using only clause titles for cross references helps in identification of the referenced clause in the event of a clause number change.

5.3 Identify subclauses not required

Identify and delete subclauses which are not required for a particular Contract. Subclauses are cross-referenced in the worksection text by **Subclause title** only. Using only clause titles for cross references helps in identification of the referenced clause in the event of a clause number change.

5.4 Complete all relevant write-in options

Some worksections, for example *0136 General requirements (Construction)* in particular, require project specific input. Prepare this early in the compilation process. Prompts **[complete/delete]** have been introduced where input is required.

5.5 Edit standard text

Keep the AUS-SPEC worksection format, to develop uniformity across Australian Councils. Only edit standard clauses where necessary and develop a policy to authorise and monitor alterations if required.

5.6 Add Special Requirements

If a project contains items of work of a specific or unique nature not covered by the existing clauses, add project specific requirements to the worksections to produce a complete specification.

5.7 Complete job specific annexures to complement the specification

Detail special project performance requirements and additional information to the worksection (e.g. sketches) in Annexures at the end of each worksection.

GUIDELINES FOR COMPILING DOCUMENTATION FOR CONTRACTS

6 ANNEXURE A - CHECKLIST FOR CONTRACT DOCUMENT COMPILATION

Contract Name: _____ Contract Number: _____

1. Transmittal Records confirm edition dates received for all standard documents utilised for the documentation compilation.

Transmittal Dates:

Technical Specification _____/_____/_____

Drawings _____/_____/_____

Conditions of contract _____/_____/_____

Submission Document Proformas _____/_____/_____

2. Scope of contract clearly defined ☐
3. Physical Location and Extent of Work clearly defined ☐
4. Type of contract payment clearly indicated (e.g. Schedule of Rates, Lump Sum/Combination) ☐
5. Quality Assurance or Integrated Management System Requirements clearly stated, Minimum Lot Sizes and Frequency of Testing checked for appropriateness to the project ☐
6. Measurement and Payment method clear and comprehensive ☐
7. Change control procedures utilised correctly for any editing of standard documents and all project specific annexures are complete ☐
8. Cross referencing to Drawings correct ☐
9. Security of documentation assured ☐

Check undertaken by: _____

Signature: _____ Date: _____

CERTIFICATION

Projects with an estimated capital cost exceeding \$150,000 require Contracts Manager certification as follows:

The contract tender document master copy has been checked by a suitably qualified and experienced person(s) who is independent of the project compilation team. The checking result is validly reflected in the checklist entries above.

Final adjustments have been made where necessary and the documentation is expected to prove appropriate for the project construction.

Independent checking has been provided by: _____
(Title)

Signed: _____ Date: _____

CHECKLIST CERTIFIED BY: _____
(Signature) (Contracts Manager)